

# HOME SAFES



*New 6031 Home Safe, Sky Blue Finish*

- CABINET.....Included
- FELT DRAWER INSERTS.....Included
- HINGE.....External Only
- LIGHTS.....Included
- DEHUMIDIFIER.....Optional
- JEWELRY BACK PANEL.....Included
- FIRE PROTECTION.....RFL Included
- LIMITED LIFETIME WARRANTY.....Included

Model	Liners	Depth	Volume	Weight	Bolts
Marquise 4026	N/A	20"/23"	10ft³	699 Lbs.	11
Marquise 6026	N/A	20"/23"	16ft³	914 Lbs.	11
Marquise 6031	N/A	27"/30"	28 ft³	1,253 Lbs.	11
Legacy 4026	AR500 Steel	20"/23"	10ft³	912 Lbs.	11
Legacy 6026	AR500 Steel	20"/23"	16ft³	1,209 Lbs.	11
Legacy 6031	AR500 Steel	27"/30"	28 ft³	1,655 Lbs.	11
Treasury 4026	AR500 + Stainless	20"/23"	10ft³	1,049 Lbs.	11
Treasury 6026	AR500 + Stainless	20"/23"	16ft³	1,408 Lbs.	11
Treasury 6031	AR500 + Stainless	27"/30"	28 ft³	1,918 Lbs.	11



# VAULT DOOR: IN OR OUT-SWING



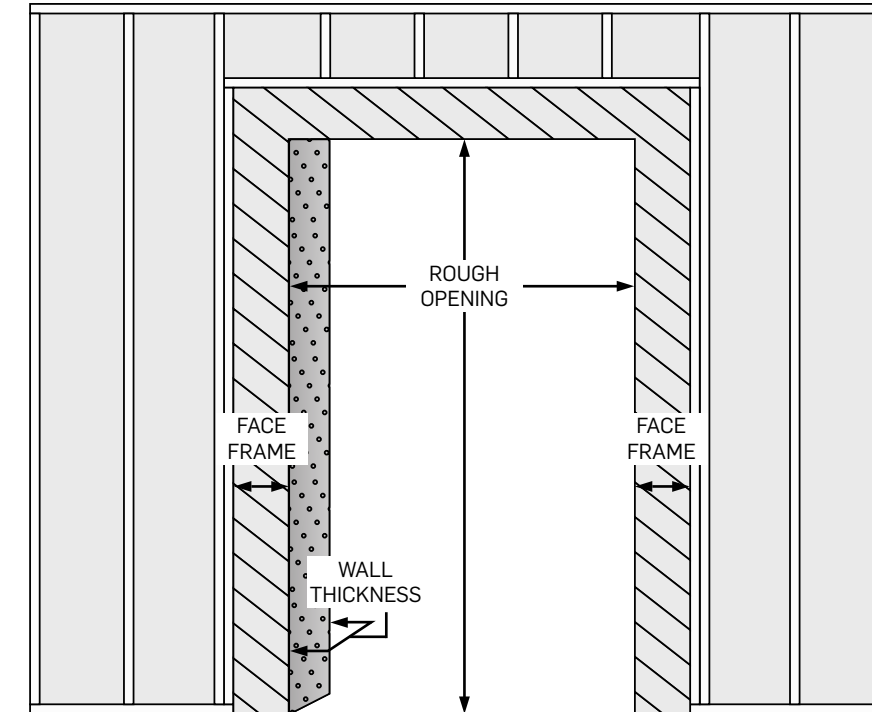
*Distressed Finish, In-Swing with Left-Swing Faux Crane-Hinge*

- AR500 STEEL.....Optional
- STAINLESS STEEL.....Optional
- PULL HANDLE.....Included
- HINGE PLACEMENT.....Left or Right
- SWING.....In or Out
- LIMITED LIFETIME WARRANTY.....Included

VAULT DOOR SPECS				
Size	Rough Opening	H x W INCLUDING FRAME	Weight	Bolts
8240	82"x 40"	85"x 45"	1,310 Lbs.	19 IN/24OUT
8248	82"x 48"	85"x 56"	1,580 Lbs.	19 IN/24OUT
9640	96"x 40"	99" x 45"	1,525 Lbs.	23 IN/26OUT
9648	96"x 48"	99" x 56"	1,840 Lbs.	23 IN/26OUT

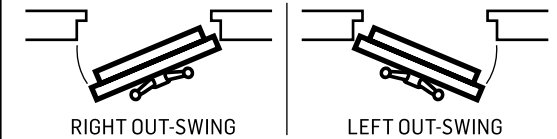
# VAULT DOOR FAQ'S

ATTENTION: Accurate measurements of the rough opening, wall thickness, and face frame clearance are the customer's responsibility to ensure a secure fit and maximum protection. Replacement parts due to incorrect measurements will incur additional charges.

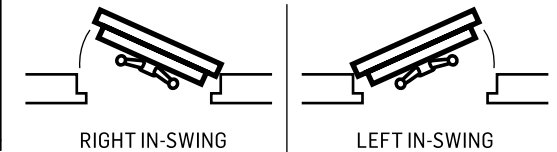


ROUGH OPENINGS MEASUREMENTS		
Size	HEIGHT	WIDTH
8240	82"	40"
8248	82"	48"
9640	96"	40"
9648	96"	48"

## OUT-SWING HINGES



## IN-SWING HINGES



## 1. ROUGH OPENING

Measure Height & Width of the Rough Opening. For Maximum Security and Fire Protection mount door directly to concrete wall. Remove wood framing and imperfections, leave smooth concrete only.

## 2. WALL THICKNESS

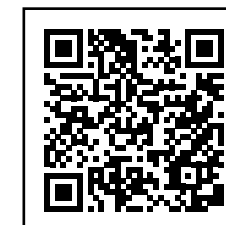
Measure the wall thickness of concrete alone. Measure in 3 places to ensure accuracy. Generally measurement will be between 6-12" Round measurement to nearest inch.

## 3. FACE FRAME

Vault Door frame will clamp directly to concrete. Leave at least 4" clearance around rough opening. Clear both sides of rough opening, inside and out.

## 4. IN-SWING VS OUT-SWING

The In-Swing door (internal hinge) ensures functionality if blocked from the outside, ideal for storm shelters or panic rooms. Out-Swing (external hinge) offers 180° door swing radius which benefits those with limited vault room space. For maximum security and fire protection clamp the Vault Door frame directly to the concrete. Custom sizes available



**VAULT DOOR INSTALLATION:**  
Scan to Watch